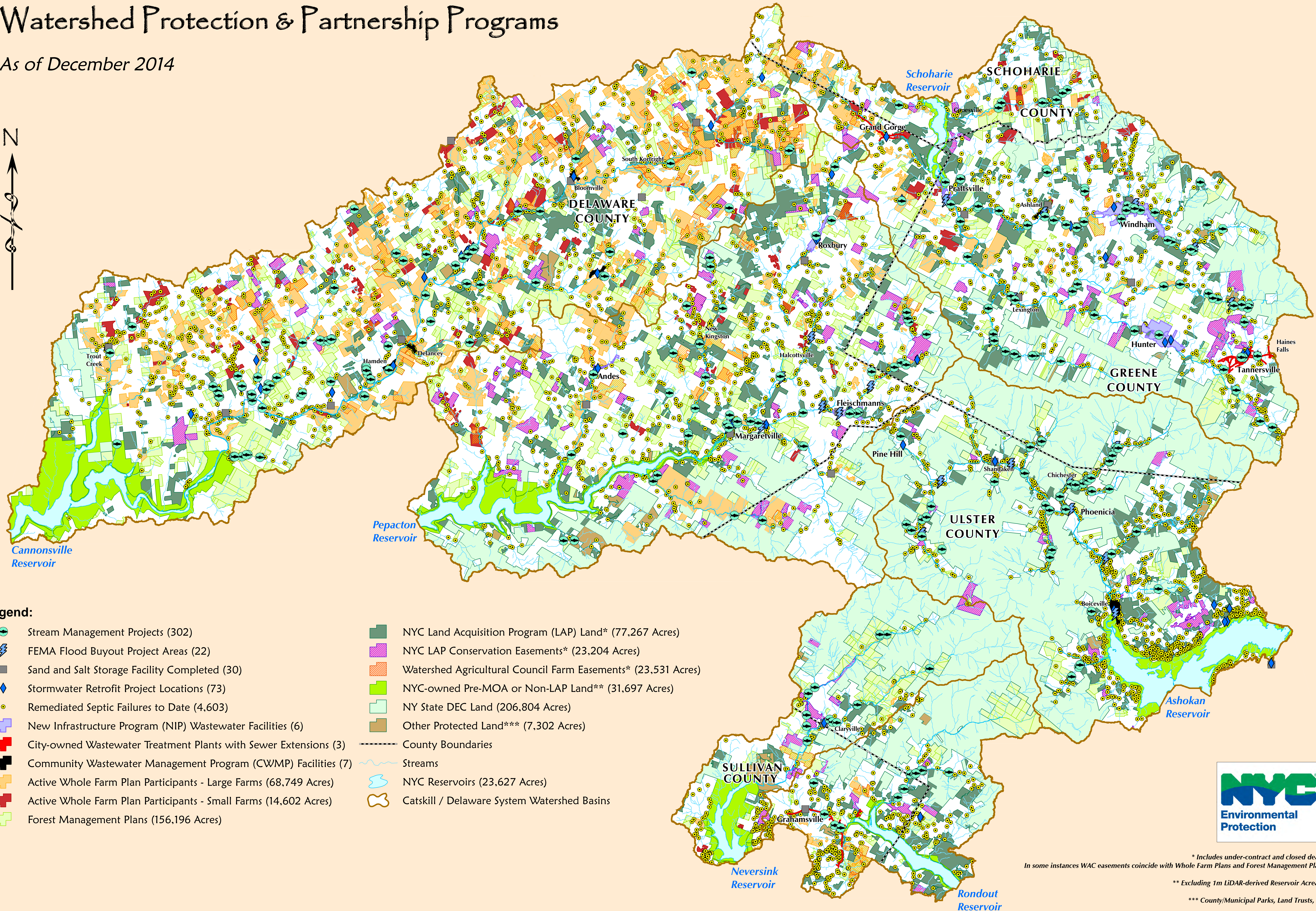


New York City West-of-Hudson Watershed Protection & Partnership Programs

As of December 2014



Legend:

- Stream Management Projects (302)
- FEMA Flood Buyout Project Areas (22)
- Sand and Salt Storage Facility Completed (30)
- Stormwater Retrofit Project Locations (73)
- Remediated Septic Failures to Date (4,603)
- New Infrastructure Program (NIP) Wastewater Facilities (6)
- City-owned Wastewater Treatment Plants with Sewer Extensions (3)
- Community Wastewater Management Program (CWMP) Facilities (7)
- Active Whole Farm Plan Participants - Large Farms (68,749 Acres)
- Active Whole Farm Plan Participants - Small Farms (14,602 Acres)
- Forest Management Plans (156,196 Acres)
- NYC Land Acquisition Program (LAP) Land* (77,267 Acres)
- NYC LAP Conservation Easements* (23,204 Acres)
- Watershed Agricultural Council Farm Easements* (23,531 Acres)
- NYC-owned Pre-MOA or Non-LAP Land** (31,697 Acres)
- NY State DEC Land (206,804 Acres)
- Other Protected Land*** (7,302 Acres)
- County Boundaries
- Streams
- NYC Reservoirs (23,627 Acres)
- Catskill / Delaware System Watershed Basins



* Includes under-contract and closed deals.
In some instances WAC easements coincide with Whole Farm Plans and Forest Management Plans.
** Excluding 1m LiDAR-derived Reservoir Acreage.
*** County/Municipal Parks, Land Trusts, etc.

